

EVZ



## ELECTRIFY YOUR LAWN CARE LINEUP!

The EVZ is the first electric-powered unit in Scag's industry-leading lawn mower lineup. Clean and quiet operation is ensured whether you're using the EVZ at home or on the job. No more dealing with a noisy engine, smelly exhaust or messy gas cans to keep the lawn looking great.

Best of all, the EVZ is built by Scag, so you know you can count on rock-solid machine construction and an unmatched quality-of-cut.

*Pre-production unit shown in photos. Actual product may vary.*

[WWW.SCAG.COM](http://WWW.SCAG.COM)



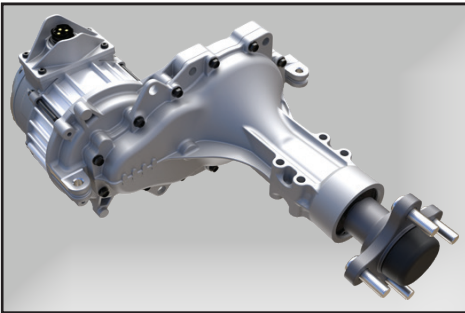
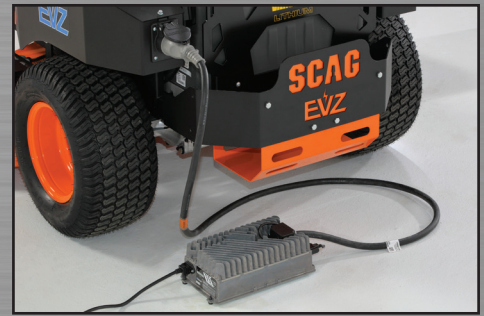




## Vanguard® Commercial Lithium-Ion Battery Pack

Dependable and efficient Vanguard 48V 5kWh Lithium-Ion commercial battery pack delivers the power you need.

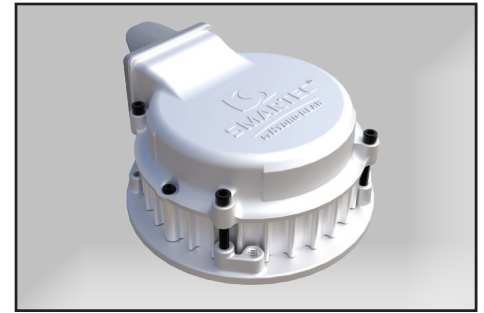
- 3-year battery warranty.
- Vanguard 1050W battery charger included with each mower.



Smartec® by Hydro-Gear ZT-2800e™ electric drive system delivers smooth drive power and incredible maneuverability.



Fully-fabricated and welded 52" Hero™ cutter deck provides an envy-inducing quality-of-cut.



Smartec D2e™ cutter deck motors provide strong cutting power, yet deliver maximum efficiency for extended run time.



Full-featured display screen shows battery charge level, hours of run time and provides system diagnostics.



Onboard Bluetooth capabilities offer remote troubleshooting through the Smartec Connect™ and Smartec MyMow® apps.



Standard LED lights illuminate the way to and from the garage or trailer in low-light conditions.

- **Heavy-duty construction** ensures years of dependable service and worry-free productivity.
- **Low-maintenance** mower design: Reduced grease points for operator convenience. No engine oil to change. No belts to replace.
- **Ground speeds up to 7 mph** for high productivity.
- **Extra-low center of gravity** for maximum stability.
- **Large 11" front caster tires and 20" drive tires** for solid traction and a smooth ride.
- **Full-featured instrument panel** with all controls within convenient reach of the operator.
- **Wide, spacious footplate** with extruded pattern for safe traction while getting on and off the mower.
- **Comfortable, adjustable, cushioned seat** for a smooth ride.
- **Large-diameter, padded, adjustable steering levers** for ergonomic operation.
- **Powder coat paint** for a showroom-quality finish and increased durability.
- **Strong warranty coverage:** 3-Year / 500-Hour Non-Commercial or 2-Year Commercial limited mower warranty coverage against manufacturing defects. 3-year Vanguard battery warranty.

Model*	Cutting Width	Power Source
SEVZ-52H	52"	Vanguard Commercial Lithium-Ion Battery Pack

©2022 Scag Power Equipment. Pre-production unit shown in photos. Actual product may vary. Specifications subject to change. Because we strive to continually improve our products, Scag reserves the right to make changes at any time without notice or obligation.

